

PROVOCAZIONI

COLOUR INNOVATION

Sirca!



Sirca S.p.A. – an Italian company specialised in wood coatings and polymers made in Italy – presents in this brochure some new special effects studied for furniture and accessories in general.

2014 Collection "Provocazioni Sirca", displayed into Salone Internazionale del Mobile of Milan, is the first of a series of initiatives that Sirca wants to promote, to emphasize the importance of colour in design.

The information given in this technical sheet is based on the best of our knowledge and experience.

Sirca guarantees the consistency of the chemical/physical characteristics of its products within the tolerances indicated above.

The final result is the full responsibility of the user who, before using the product, must check that it meets his requirements in terms of safety, application equipment, support material to paint, and environmental conditions.

Sirca's technical and commercial network is at your complete disposal to deal with any questions regarding how to correctly apply and use our products.

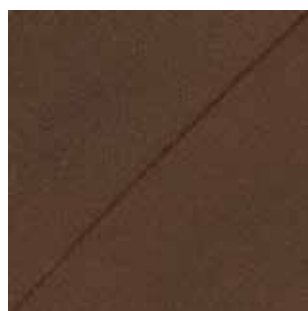
PROVOCAZIONI

COLOUR INNOVATION

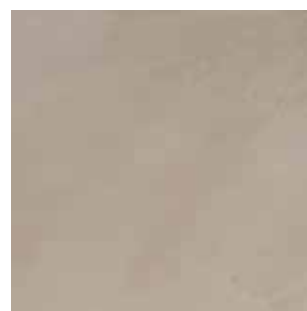
Sirca!



cement
series



rustouch



veltouch

cement





c e m e n t

series

Mixed water/solvent based cycle applied to reproduce the typical irregular aspect of a cement made surface.

The painting cycle includes a special water based sealer, which, properly applied, reproduce the typical irregular aspect of a cement made surface, a water based patina which further underline the irregularity and an acrylic clear topcoat, which provide an exceptional natural aspect to the painted item.

This topcoat provides, in addition, exceptional soft feel and antiscratch and antiyellowing properties.

cement
series



cement

series



DESCRIPTION:	Water based cement effect
USE:	Furniture and accessories in general
APPLICATION SYSTEM:	By spray and spatula
CHEMICAL-PHYSICAL CHARACTERISTICS	
SPECIFIC WEIGHT: (g/cc a 20°C)	1,300 ± 0,010
SOLID CONTENT:	57% ± 1
VISCOSITY:	90000cps
PRODUCT PREPARATION	
CEMENT series	Ready to use (by spatula)
Water	50% (dilution for spray application)
APPLICATION CHARACTERISTICS	
EXPENDITURE: (g/sqm)	200 - 250
NUMBER OF COATS:	2
DRYING at 20°C (200 g/sqm)	- DUST FREE: 20'
	- TOUCH DRY: 40'
	- STACKABLE: 24 hours

GENERAL FEATURES

This is a water based product which provides to the substrate a cement effect. It is characterised by optimal coverage and good antiscratch properties. It is suitable for furniture and accessories in general for interior use.

The cycle is finished with an acrylic clear topcoat, natural effect, which improves chemical resistances and the final appearance to the painted item.

SUGGESTED CYCLE

Substrate: Wood/Raw MDF

- Application by spray, using aerograph with 3 mm nozzle, diluted with water at 100%
- After complete drying, about four hours, application of the product by spray, diluted at 50%, using aerograph with 3 mm nozzle, wait at least 40 minutes then, using a spatula, apply the product with alternative movements.
- After complete drying, around eight hours, lightly sand the surface to remove potential roughness and achieving the characteristic shading of cement.
- Apply the clear acrylic topcoat OPU400, natural effect.

EXPIRY DATE: 12 months

Data refer to product stored in sealed and original packaging.

STORAGE: Store in cool and well ventilated places.

rustouch





rustouch

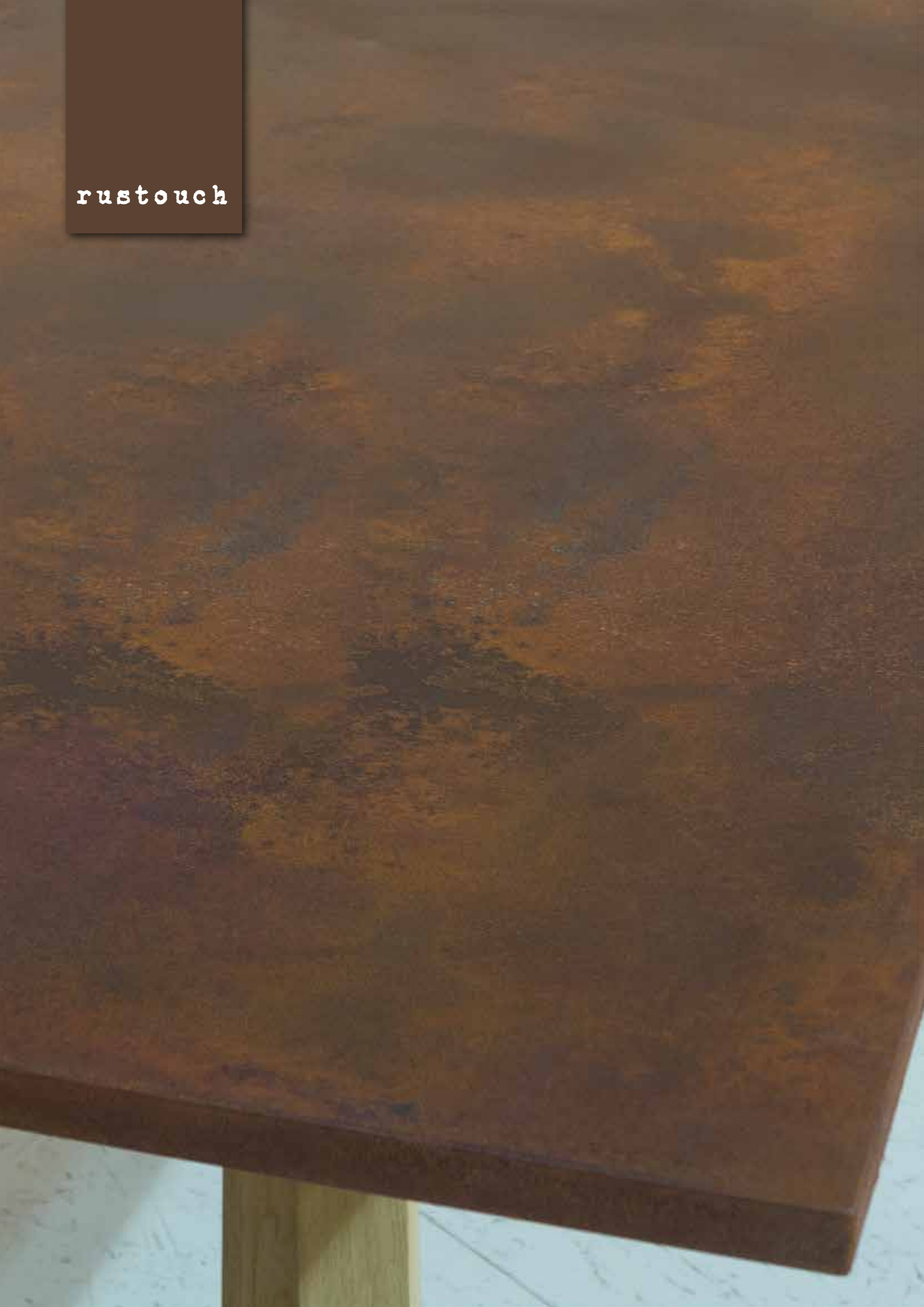
Solvent based cycle which reproduces an iron substrate worn out by atmospheric agents to which it was exposed for a long period of time.

The painting cycle includes a special sealer formulated with metallic powder that, properly treated for a certain period of time, reproduces an iron substrate worn out by severe atmospheric agents to which it was exposed.

The cycle is closed by an clear acrylic topcoat which provides an exceptional natural aspect to the painted item.

This topcoat provides, in addition, exceptional antiscratch and antiyellowing properties.

rustouch



rustouch

DESCRIPTION:	Dark rust effect
USE:	Furniture and accessories in general
APPLICATION SYSTEM:	By spray

CHEMICAL-PHYSICAL CHARACTERISTICS

SPECIFIC WEIGHT: (g/cc at 20°C)	1,400 ± 0,010
SOLID CONTENT:	70% ± 1
VISCOSITY: (Ford Cup 8 at 20°C)	50" ± 2

PRODUCT PREPARATION

RUSTOUCH	100 parts in weight
CTN55	10 parts in weight
DPU809	10 - 40 parts in weight

APPLICATION CHARACTERISTICS

EXPENDITURE: (g/sqm)	130 - 150
NUMBER OF COATS:	1
DRYING at 20°C (100 g/sqm)	- DUST FREE: 10- 15'
	- TOUCH DRY: 60'
	- STACKABLE: 24 hours

GENERAL FEATURES

This is a special effect characterised by good scratching resistance and optimal coverage, suitable for furniture and accessories for interior use.

SUGGESTED CYCLE

Substrate: Wood/MDF coated with filling sealers, or directly on raw MDF

- A) Application of RUSTOUCH added with hardener and thinner
- B) After complete drying, around eight hours, sanding carefully with proper paper grit without removing the paint film
- C) Apply profusely by spray or dropping or by pad, the oxidant solution CRAO, then let the substrate dry at room temperature. This process can be repeated more than once, in order to achieve the desired oxidation level.
- D) After complete drying, around twelve hours, apply the protection product CRPR, which stops the oxidation step.
- E) Wait at least three hours then apply the clear acrylic topcoat, OPU400 natural effect, to improve chemical resistances and provide the natural aspect of rusted metal.

EXPIRY DATE: 12 months

Data refer to product stored in sealed and original packaging.

STORAGE: Store in cool and well ventilated places. Polyisocyanate catalysts should always be kept dry; in the event of partial use close the tins again perfectly and use up the remaining product in a short period of time.

veltouch



veltouch

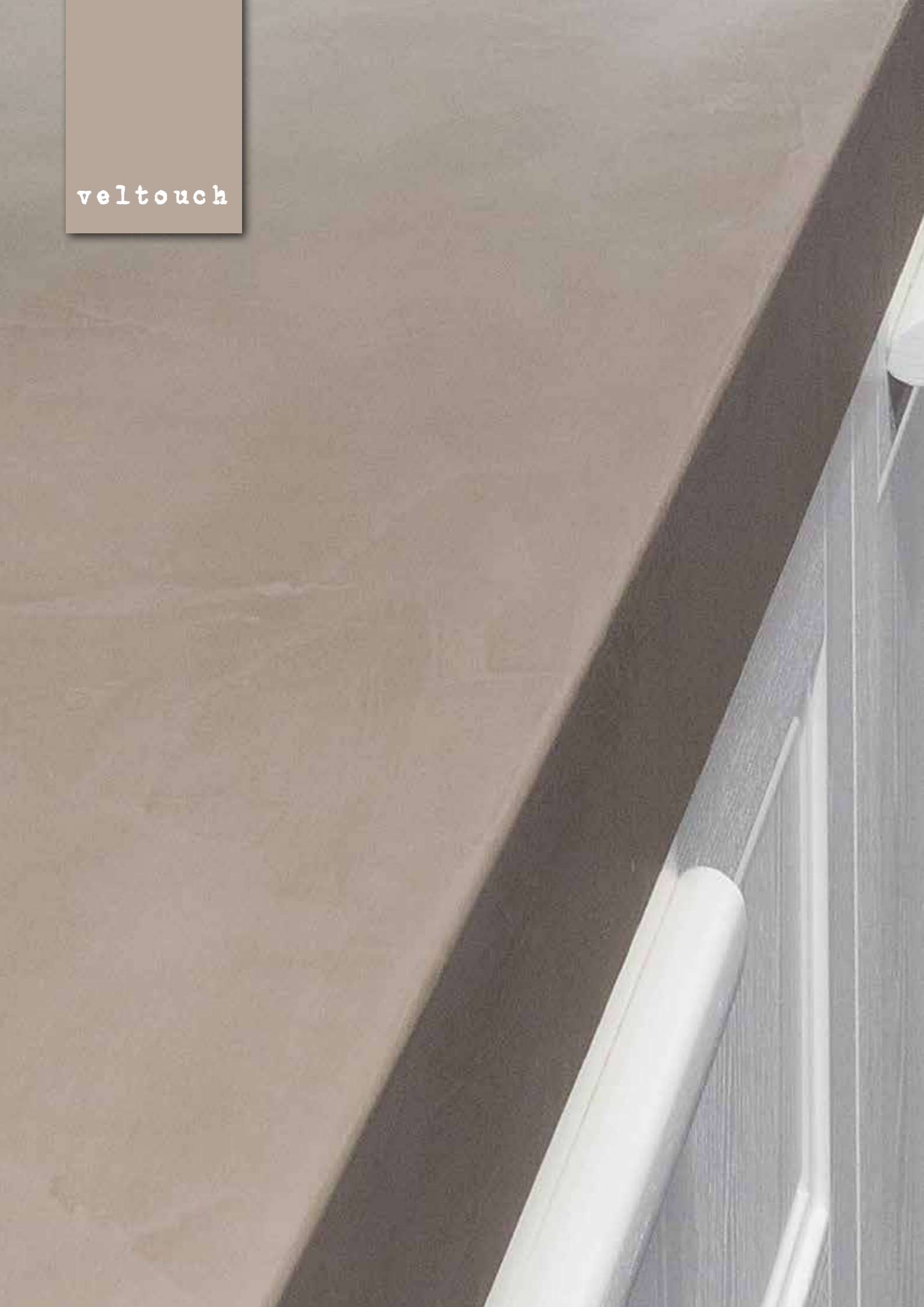
Solvent based cycle which reproduces the velvet effect, providing an exceptional soft feel.

The painting cycle includes a polyester or polyurethane sealer, overcoated with a polyurethane pigmented topcoat and a clear velvet effect.

It is a clear bicomponent topcoat formulated with resins characterised by excellent antiscratch properties, abrasion and antiyellowing resistances.

The use of special additives provides a matt and silky aspect, without any loss of transparency.

veltouch



veltouch

DESCRIPTION:	Clear velvet effect
USE:	Furniture and accessories in general
APPLICATION SYSTEM:	By spray

CHEMICAL-PHYSICAL CHARACTERISTICS

SPECIFIC WEIGHT: (g/cc a 20°C)	1,08 ± 0,010
SOLID CONTENT:	48% ± 1
GLOSS LEVEL:	2-3 glos
VISCOSITY: (Ford Cup 4 at 20°C)	50" ± 2

PRODUCT PREPARATION

VELTOUCH	100 parts in weight
CTN 55	20 parts in weight
DPU520	30 - 40 parts in weight

APPLICATION CHARACTERISTICS

EXPENDITURE: (g/sqm)	130 - 150
NUMBER OF COATS:	1 (the product cannot be overcoated)
DRYING at 20°C (140 g/mq)	- DUST FREE: 20 minutes
	- TOUCH DRY: 2 hours
	- STACKABLE: 24 hours

GENERAL FEATURES

This is a clear bicomponent topcoat formulated with resins characterised by excellent antiscratch properties, abrasion and antiyellowing resistances. The use of special additives provides a matt and silky aspect, without any loss of transparency.

It is suitable for furniture and accessories in general for interior use, the product can be applied on PU or polyester sanded sealer, or directly on PU pigmented OPP530NI series topcoats, without sanding process (wait eight hours before overcoating of OPP530NI series).

EXPIRY DATE: 12 months

Data refer to product stored in sealed and original packaging.

STORAGE: Store in cool and well ventilated places. Polyisocyanate catalysts should always be kept dry; in the event of partial use close the tins again perfectly and use up the remaining product in a short period of time.



www.sirca.it